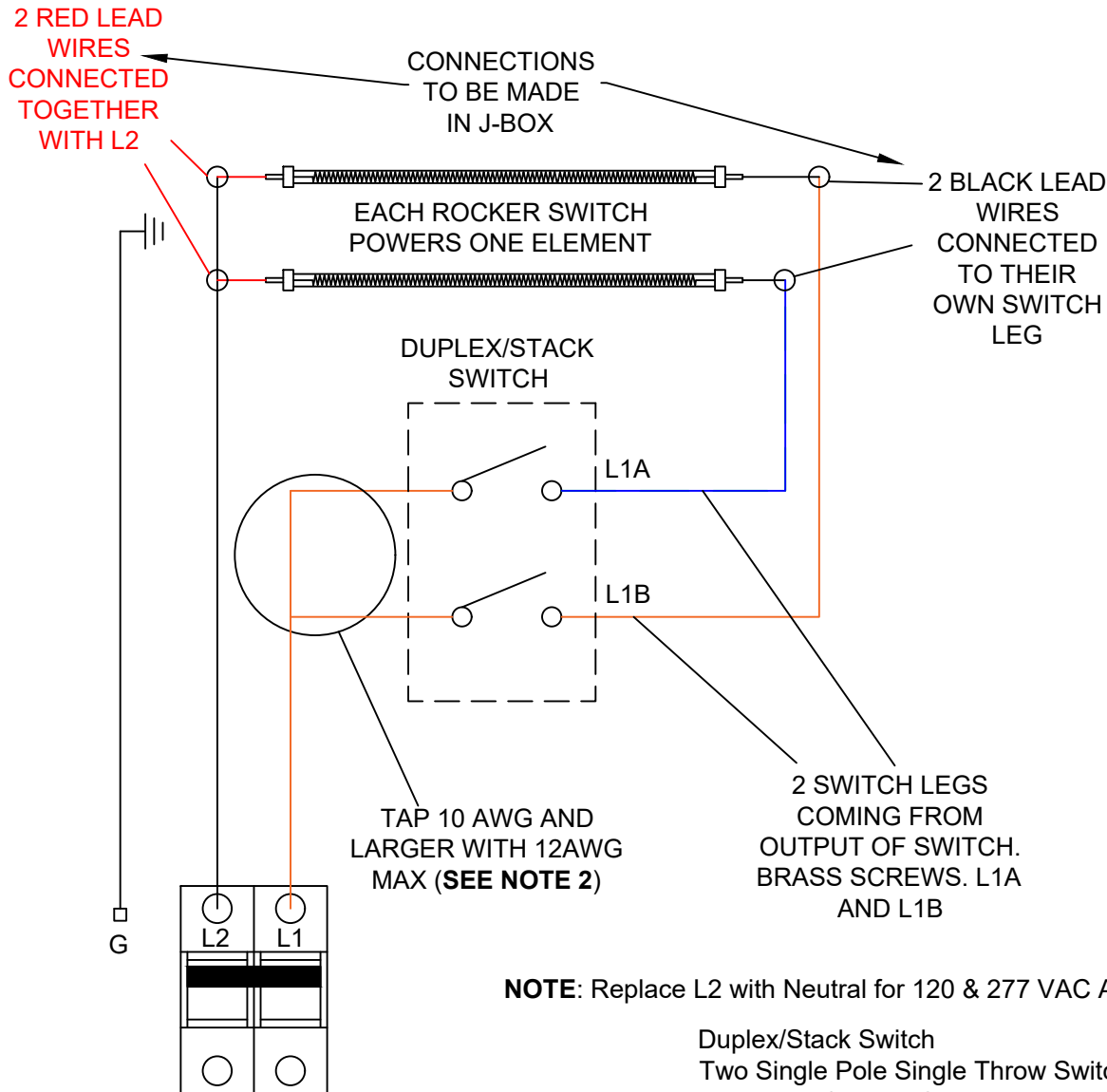


3 WIRE APPLICATION
(FOR INSTALLING ONE HEATER WITH TWO ELEMENTS)



NOTE: Replace L2 with Neutral for 120 & 277 VAC Applications.

Duplex/Stack Switch
 Two Single Pole Single Throw Switches
 Range: 120/277 VAC
 Recommended not to Exceed
 120 VAC = 1800 Watts Max-Per Switch
 208/220 VAC = 3000 Watts Max-Per Rocker Switch
 240/277 VAC = 4000 Watts Max-Per Rocker Switch
 20 Amps Max-Per Rocker Switch

NOTES:

- 1. EACH INDIVIDUAL ROCKER SWITCH IS RATED FOR 20 AMPS MAX. (EG: ONE 6000 WATT 240VAC HEATER CAN BE CONTROLLED BY ONE DUPLEX STACK SWITCH ASSEMBLY WHEN THE CIRCUIT IS TAPPED CORRECTLY).**
- 2. FOR TAPPING RULES, SEE NEC 210.24. LARGE BLUE WIRE NUT PROVIDED. USE OTHER EQUIVALENT METHOD IF PREFERRED.**
- 3. ONE LINE ALWAYS HOT WHEN DUPLEX STACK SWITCHES ARE IN OFF POSITION. DISCONNECT MUST BE PROVIDED WITHIN VICINITY OF HEATER FOR SERVICING THAT OPENS ALL UNGROUNDED CONDUCTORS. REFER TO LOCAL CODE AND NATIONAL CODE FOR DISCONNECT LOCATION.**

NOTE: ALL INFRA TECH PRODUCTS MUST BE INSTALLED BY A LICENSED ELECTRICIAN

		15700 S. Figueroa St. Gardena, California 90248 Phone: (310) 354-1250 Fax: (310) 523-3674	
		www.infratech-usa.com	
DESCRIPTION			
DUPLEX/STACK SWITCH WIRING 120/277 VAC 20 AMP PER ROCKER SWITCH			
DATE	ITEM#	N/A	
Dec. 17 2019	DRAWN BY:	CL	